

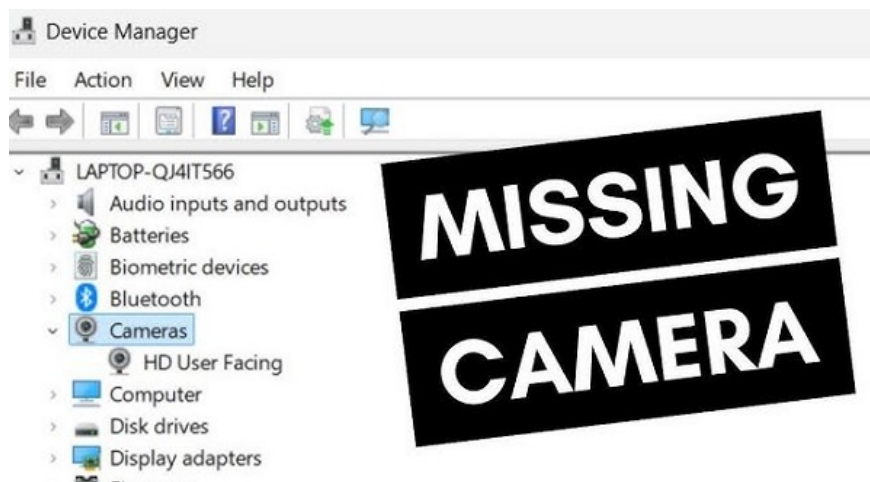
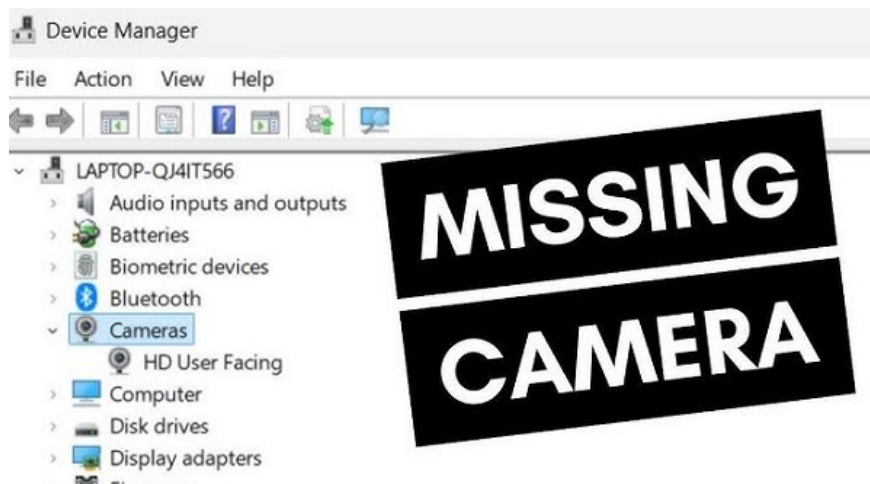
No camera in Device Manager [Quick Fix]

There is no camera in Device Manager so you can't check/update the driver according to your needs?

TipsMake will help you find out the cause and how to fix it.

The camera is not working or is not working properly, so according to the usual solutions, you go to Device Manager to reinstall the camera driver. But strangely, you do not see the camera in Device Manager. Rest assured because you are not the only one. There are many other users who also encounter the problem of **no camera in Device Manager**.

TipsMake has shared detailed instructions on how to fix this problem, helping you find the camera in Device Manager. Keep these computer tips in mind!



No camera in Device Manager, what to do?

Losing the camera driver on Win 11/Win 10 is not a rare situation. Before coming to how to fix the error of not being able to open the camera on Win 11/Win 10 in Device Manager. Try to find out if the camera is in another location in Device Manager? For example, the items:

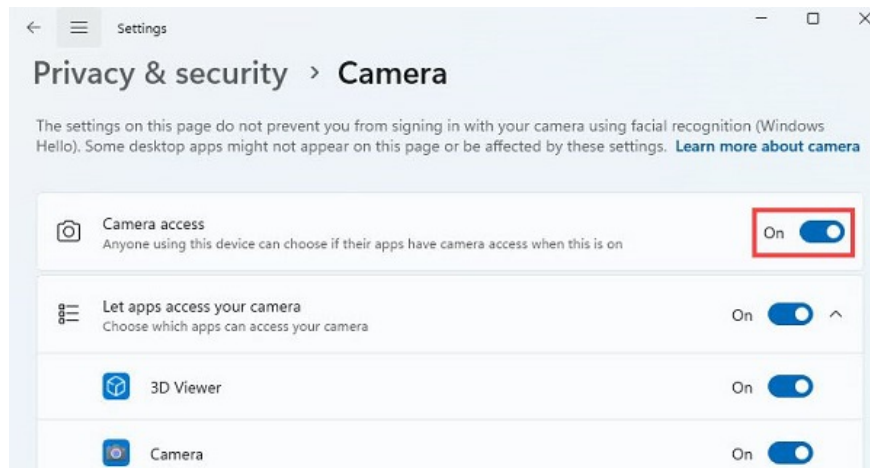
1. *Cameras*
2. *Imaging devices*
3. *USB devices/ USB device hub*

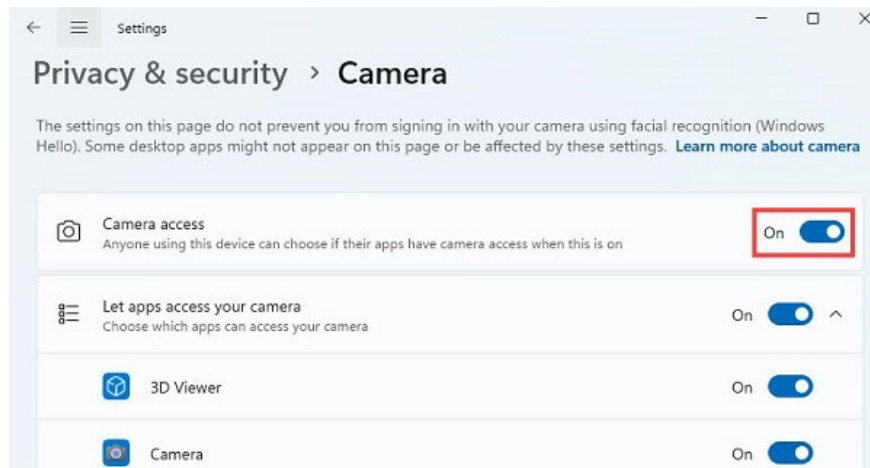
If you still can't find it, apply the following solutions to find the camera in Device Manager!

1/ Allow the device to access the camera

It's possible that you haven't allowed your device to access the camera, so it's understandable that Device Manager doesn't have a camera.

1. **Step 1** : Press **Windows + S** to open the search panel > Enter the keyword **camera privacy settings** > Click to open **Camera privacy settings** when the results appear.
2. **B2** : In the next interface, you need to make sure that the **Camera access** option is enabled. After enabling it, go back to Device Manager and check if the camera has reappeared.

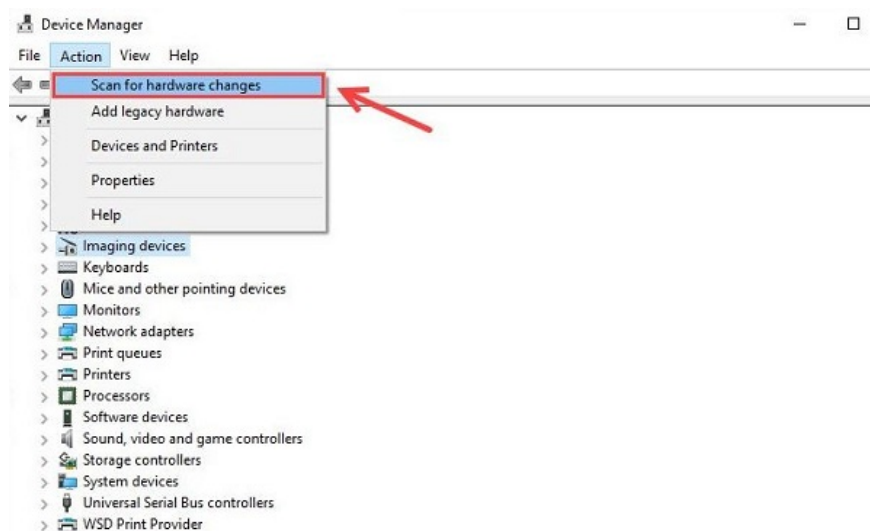


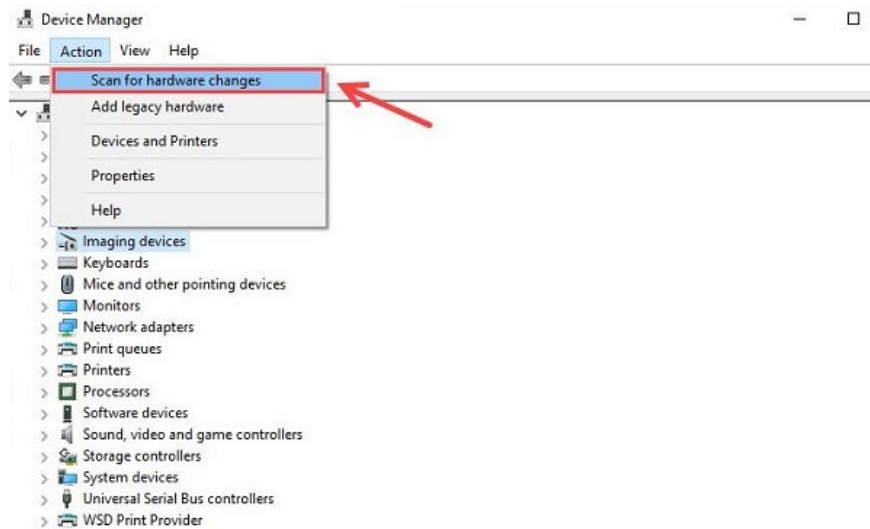


2/ Scan for hardware changes

If there is still no camera in Device Manager Win 11/Win 10, you need to scan for hardware changes because the computer may have installed the driver but Windows cannot detect the driver.

1. **Step 1** : Right-click on the Windows logo > Select **Device Manager** to open.
2. **B2** : Click on **Cameras** (or Imaging devices/ USB devices) > Then, click on the **Action** tab above > Click on **Scan for hardware changes** .
3. **B3** : If your webcam appears, it means the driver has been successfully detected. You need to restart your computer for these changes to take effect.





3/ Update device driver

You need to make sure that all drivers are up to date. Since you cannot update drivers from Device Manager, the camera is not visible. Therefore, you need to visit the manufacturer's website and install the latest webcam driver (along with other device drivers) according to your device!

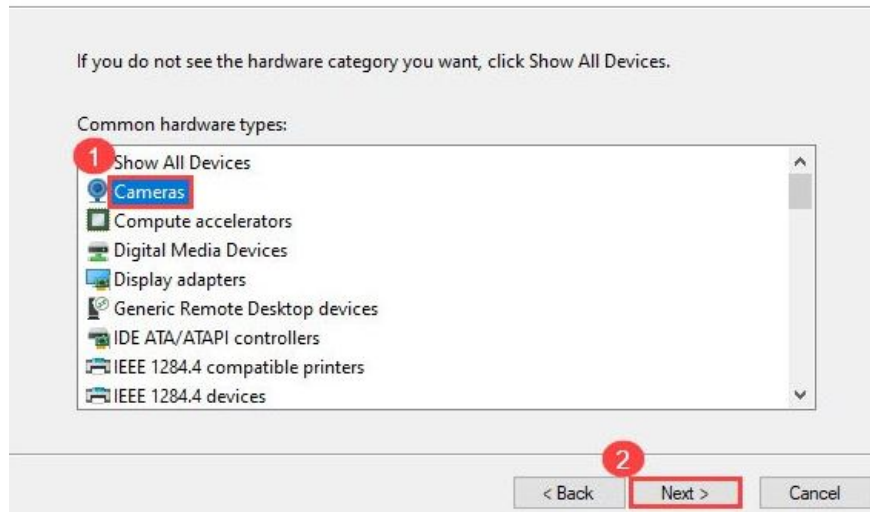
4/ Manually add camera driver

In case all drivers are updated but the camera is still not in Device Manager, users can add the camera manually with the steps below:

1. **Step 1** : Press the **Windows + X** key combination > Select **Device Manager** .
2. **B2** : Click on the **Action** tab > Select the **Add legacy hardware** line .
3. **B3** : Next, when the *Welcome to the Add Hardware Wizard* window shows up , click **Next** .
4. **B4** : In this window, you need to tick the line **Install the hardware that I manually select from a list (Advanced)** > Continue to click **Next** .
5. **B5** : Tick **Cameras** > Click **Next** again.
6. **B6** : If the webcam driver appears in the list, select it and click Next. If there is no device, the user needs to go back to the last window and select Imaging devices > Next > Select a device and click Next again.

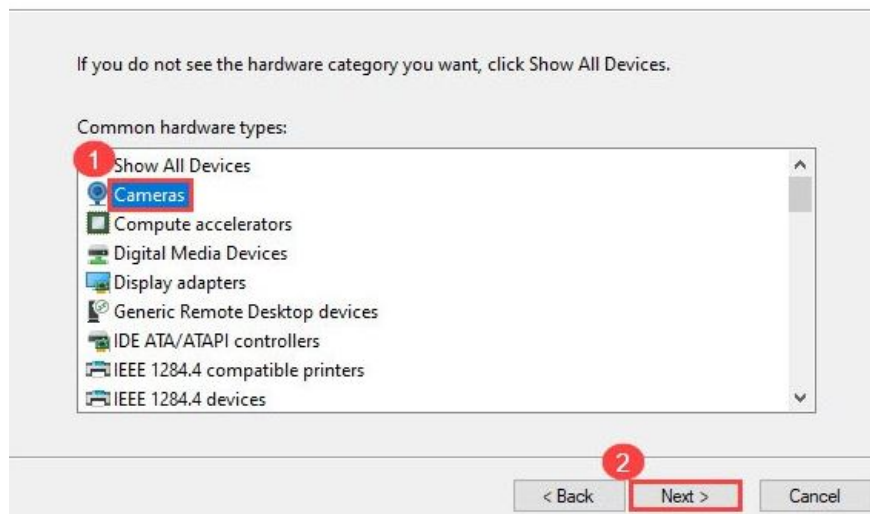
Add Hardware

From the list below, select the type of hardware you are installing



Add Hardware

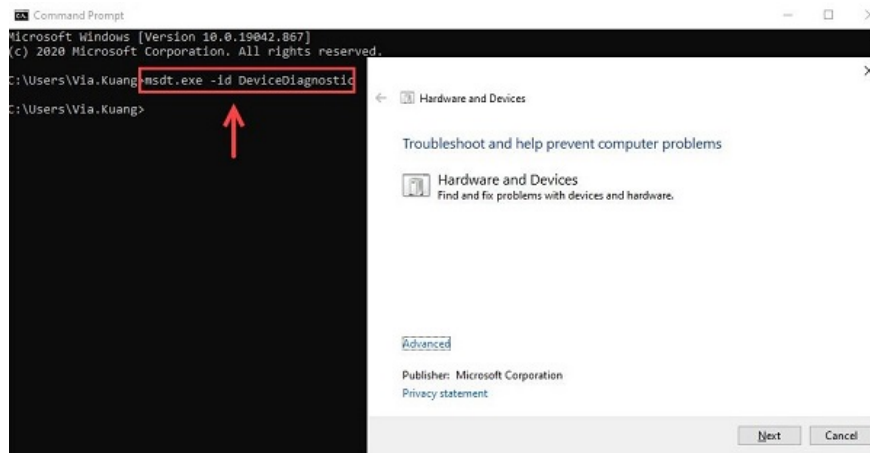
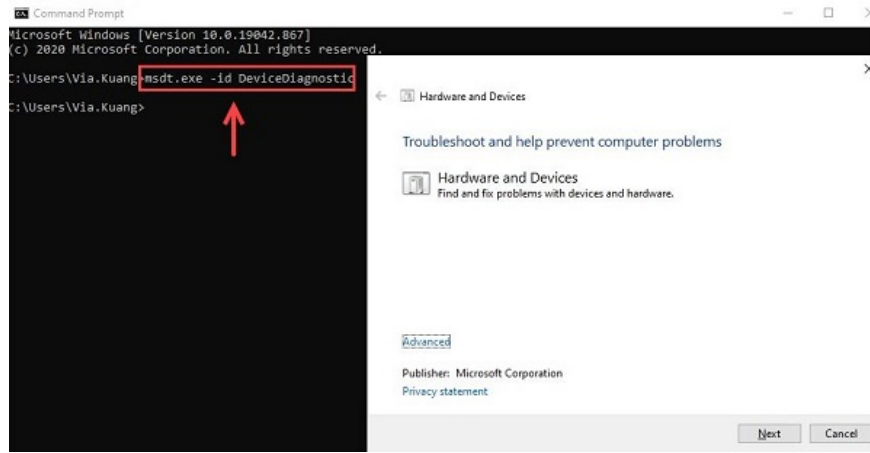
From the list below, select the type of hardware you are installing



5/ Run the hardware troubleshooter to fix the error

If none of the above solutions help you find your camera in Device Manager, it's time to run the hardware troubleshooter. Press **Windows key + R** > When the Run dialog box appears, type **cmd** and press **OK** .

Next step, you enter the command (can copy and paste) **msdt.exe -id DeviceDiagnostic** > Press **Enter** to run the command > When the new window appears, you click **Next** > Select **Apply this fix** > Wait for this process to complete and you may have to restart your computer to save the changes.



TipsMake hopes that the above solutions will help you fix the no camera error in Device Manager successfully!

You finished reading the article "**No camera in Device Manager [Quick Fix]**" edited by the [TipsMake](#) team. We hope this article has provided you with many useful tech tips and tricks. You can search for similar articles on tips and guides. Thank you for reading and for following us regularly.